





SIGNUM HOTEL

PODGORICA

Ul. 4. jula, br. 62/3

LOKACIJA

SIGNUM HOTEL nalazi se u Podgorici, na Pobrežju, u Ulici 4. jula br. 62/3 na svega 1,5km od centra grada.

Signum Hotel svojim dosadašnjim radom u velikoj mjeri doprinosi građenju što bolje slike ugostiteljstva Podgorica.

Nalazi se na veoma pristupačnoj lokaciji iz svih djelova grada i blizu svih objekata saobraćajne infrastrukture.

SIGNUM HOTEL is located in Podgorica, in Pobrežje, at 4. jula street no. 62/3, only 1.5 km from the city center.

With its previous work, Signum Hotel contributes to a large extent to building the best possible image of the hospitality industry in Podgorica.

It is located in a very accessible location from all parts of the city and close to all transport infrastructure facilities.



ODREDIŠTE
Destination



UDALJENOST
Distance



VRIJEME
Time

1	Park Ljubović	650m	2min
2	BIG fashion šoping centar <i>Shopping centre BIG Fashion</i>	3,5km	11min
3	Centar grada <i>City centre</i>	1,5km	5min
	Aerodrom Golubovci <i>Airport Golubovci</i>	9km	10min



 **SIGNUM**
HOTEL

O OBJEKTU

JEDINSTVENI KONCEPT
STAMBENO-POSLOVNOG
OBJEKTA U KOM SU PRIZEMLJE I
POSLEDNJE 3 ETAŽE
NAMIJENJENE POSLOVANJU, A
PROSTORI OD 1. DO 4. SPRATA
NAMIJENJENI SU STANOVANJU.

A UNIQUE CONCEPT OF A
RESIDENTIAL AND BUSINESS
BUILDING, WHERE THE GROUND
FLOOR AND THE LAST 3 FLOORS ARE
FOR DIFFERENT KINDS OF
BUSINESS, AND THE SPACES FROM
THE 1ST TO 4TH FLOOR ARE
RESIDENTIAL.

Hotel raspolaže sa sledećim sadržajima:

- Parking mjesta u podzemnoj garaži
- GYM i SPA zona od 250m²
- Recepcija na prizemlju
- 19 smještajnih jedinica na na 5. spratu
- 13 smještajnih jedinica na 6. spratu
- Konferencijska sala kapaciteta 70 mjesta u teatar postavci na 6. spratu
- Rooftop restoran na 7. spratu sa prostranim terasama

The hotel has the following facilities:

- *Parking spaces in the underground garage*
- *GYM and SPA area of 250m²*
- *Reception on the ground floor*
- *19 accommodation units on the 5th floor*
- *13 accommodation units on the 6th floor*
- *Conference hall with a capacity of 70 seats in a theater setting on the 6th floor*
- *Rooftop restaurant on the 7th floor with spacious terraces*

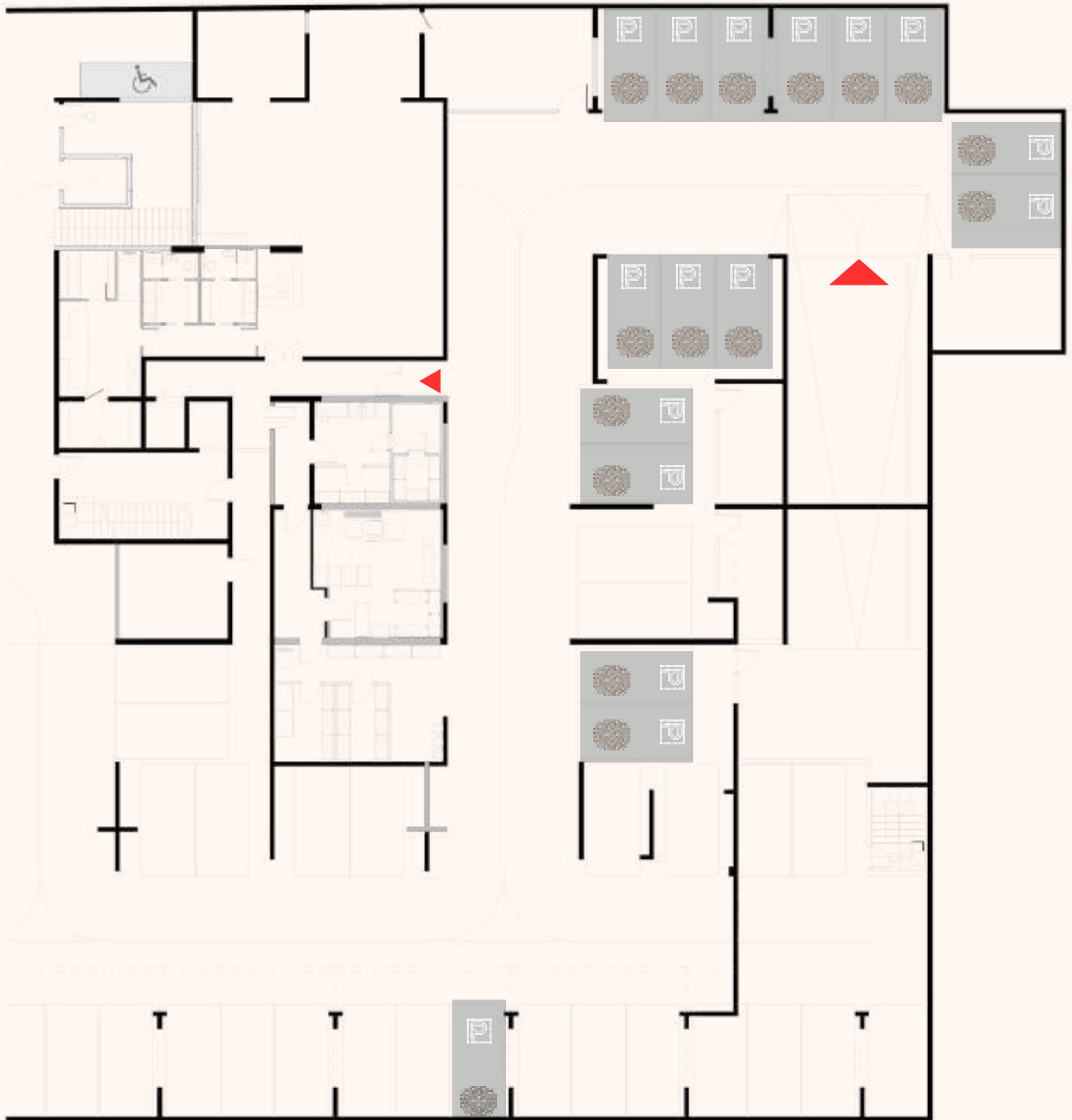


2.7m

GARAGE



GARAŽA



Garaži se pristupa pomoću rampe koja je u potpunosti natkrivena. Širina rampe je dvije kolske trake. Pristup je omogućen pomoću kartica ili pozivom recepcije pomoću interfona. Obezbijedeno je 16 parking mjesta.

Direktno iz garaže je moguće komunikacijama proći do lifta koji vodi dalje ka svim ostalim spratovima.

The garage is accessed via fully covered ramp. The width of the ramp is for two car lanes.

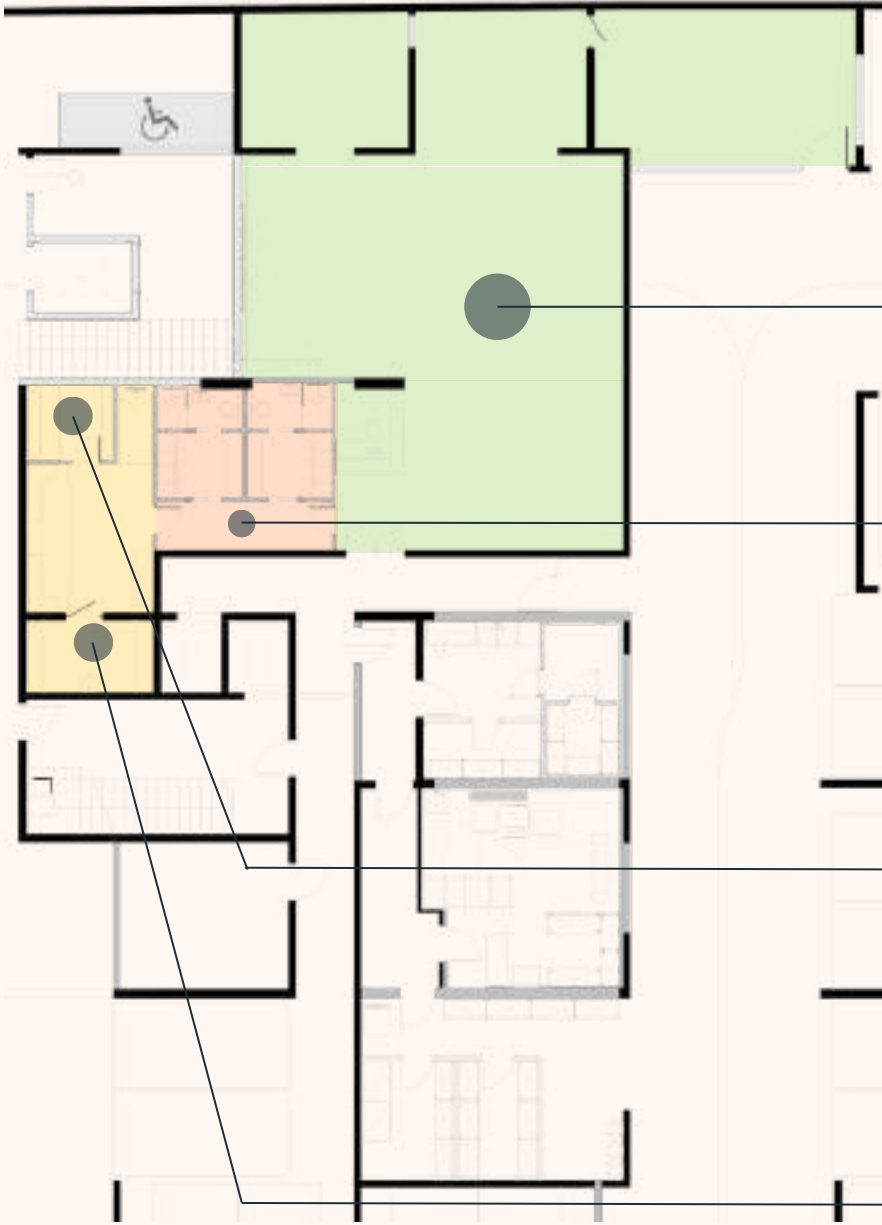
Access is enabled using cards or by calling the reception using the intercom.

16 parking spaces are provided.

Directly from the garage, it is possible to go to the elevator that leads to all the other floors.



GYM & SPA



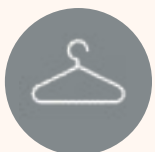
Teretana u potpunosti opremljena spravama italijanskog brenda Panatta.
GYM fully equiped with italian brand Panatta equipment.

190m²



Sauna i tursko kupatilo
Sauna and steam bath same time

30m²



Muška i ženska svlačionica sa kupatilima.
Men's and women's changing rooms with separated bathrooms.

30m²

Svi navedeni sadržaji dostupni su samo gostima hotela uz ključ karticu.
All here mentioned contents are available for hotel guests only with keycard.

RECEPCIJA

- 00-24h radno vrijeme
- Ljubazno i predusretljivo osoblje
- Prijatan enterijer
- Toalet u sklopu recepcije
- Sigurnosni sef
- *00-24h working hours*
- *Friendly and helpful staff*
- *Pleasant interior*
- *Toilet in the reception area*
- *Security safe*

50m²



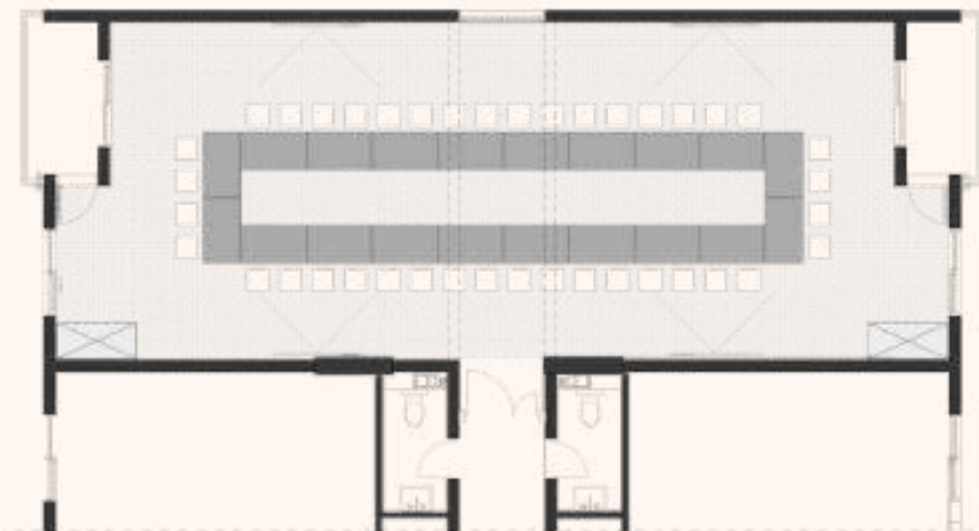
KONFERENCIJSKA SALA

- Maksimalan kapacitet - 70 osoba u teatar postavci
- Mogućnost različitih postavki u skladu sa organizacijom događaja
- Tehnička podrška i sjajne tehničke mogućnosti
- Mogućnost korišćenja dnevnog svijetla i totalno zamračivanje
- Stručan tim koji realizuje događaje

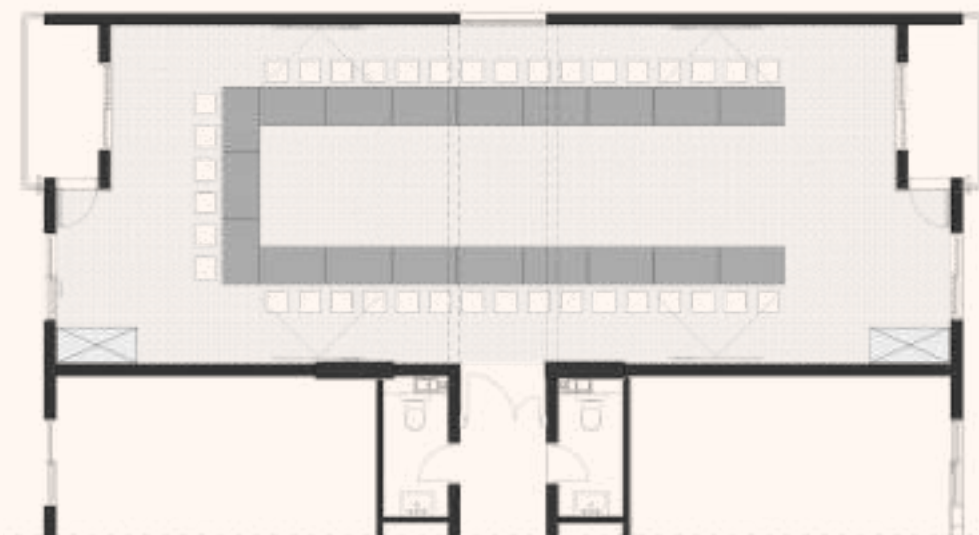
- *Maximum capacity - 70 people in a theater setting*
- *The possibility of different settings in accordance with the organization of the event*
- *Technical support and great technical capabilities*
- *The possibility of using daylight and total dimming*
- *A professional team which realizes events*

100m²

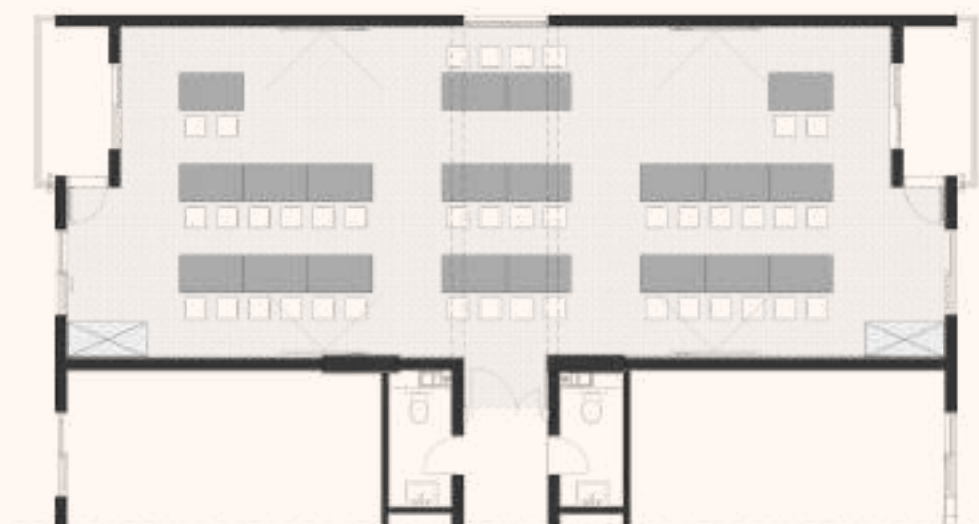




**Postavka CLOSED U-SHAPE - kapacitet
40 osoba**
*CLOSED U-SHAPE setup - 40 people
capacity*



U-SHAPE - kapacitet 38 osoba
U-SHAPE setup - 38 people capacity



CLASSROOM 2 - kapacitet 40 osoba
CLASSROOM 2 setup - 40 people capacity

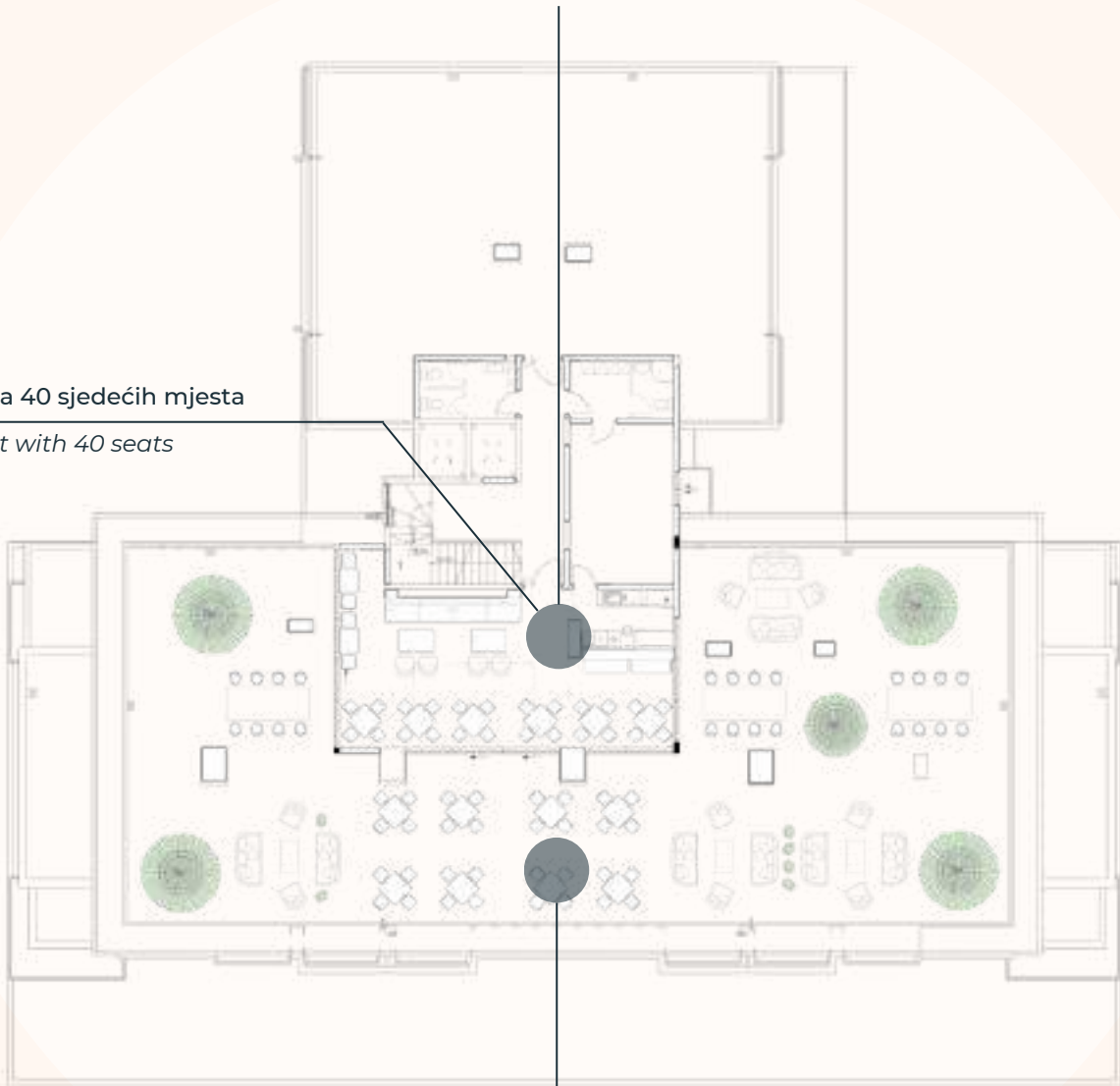
RESTORAN

- Elegantan restoran na krovu, sa prostranom terasom sa pogledom na grad, idealno je mjesto za početak dana i održavanje privatnih ili poslovnih događaja.
- Pažljivo odabrani internacionalni specijaliteti, upareni sa najboljim vinima, ili meni po mjeri upotpuniće svaki događaj i doprinijeti uživanju svih čula.
- *The elegance of the rooftop restaurant, with an ample terrace overlooking the city, is ideal place to start the day and host private or business event.*
- *Carefully selected international specialties, paired with the finest wines, or a tailor-made menu will complete every event and contribute to the enjoyment of all the senses.*





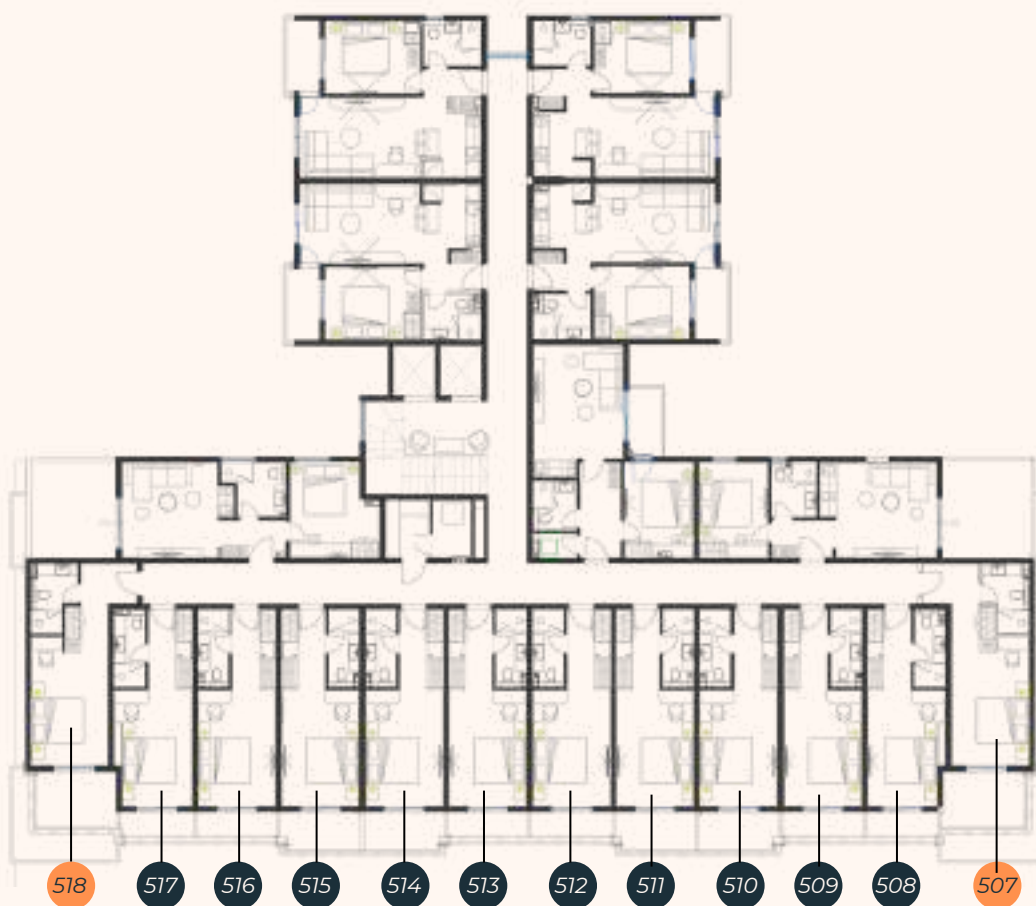
Restoran sa 40 sjedećih mjesta
Restaurant with 40 seats



TIPOVI JEDINICA

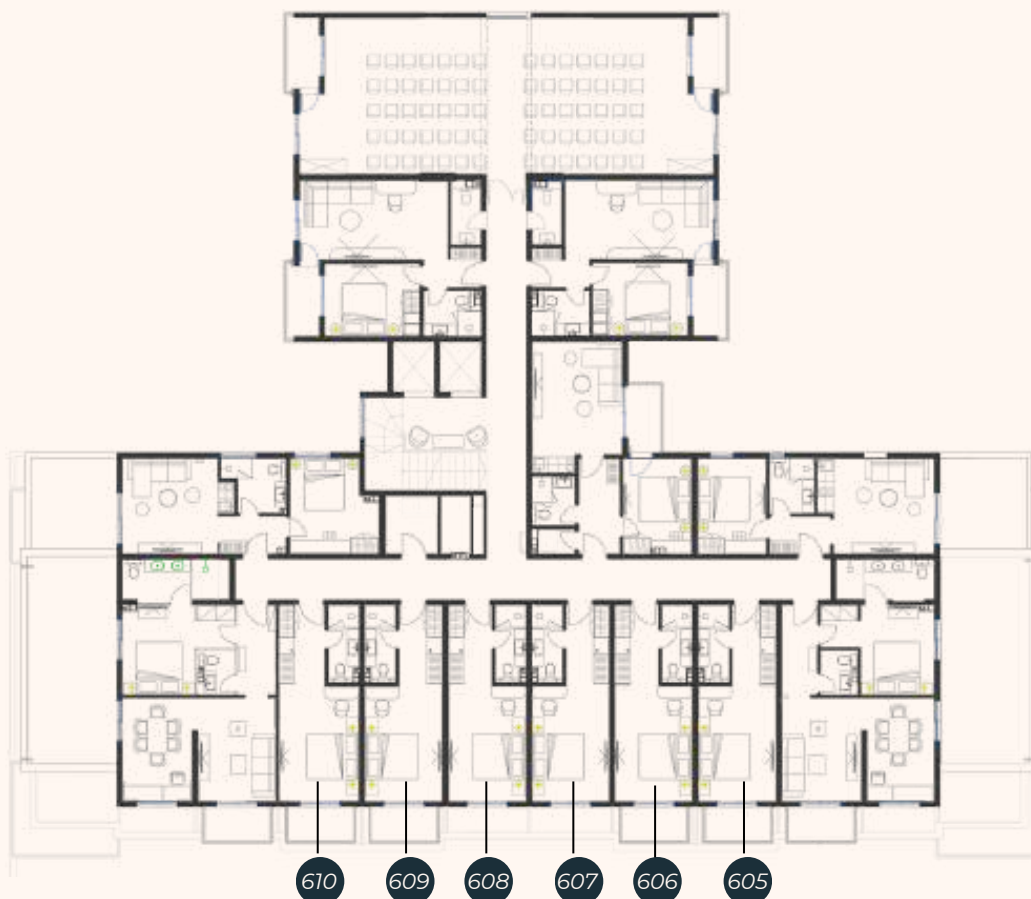


Tip A - Dvokrevetna soba - V sprat / Double rooms - 5th floor

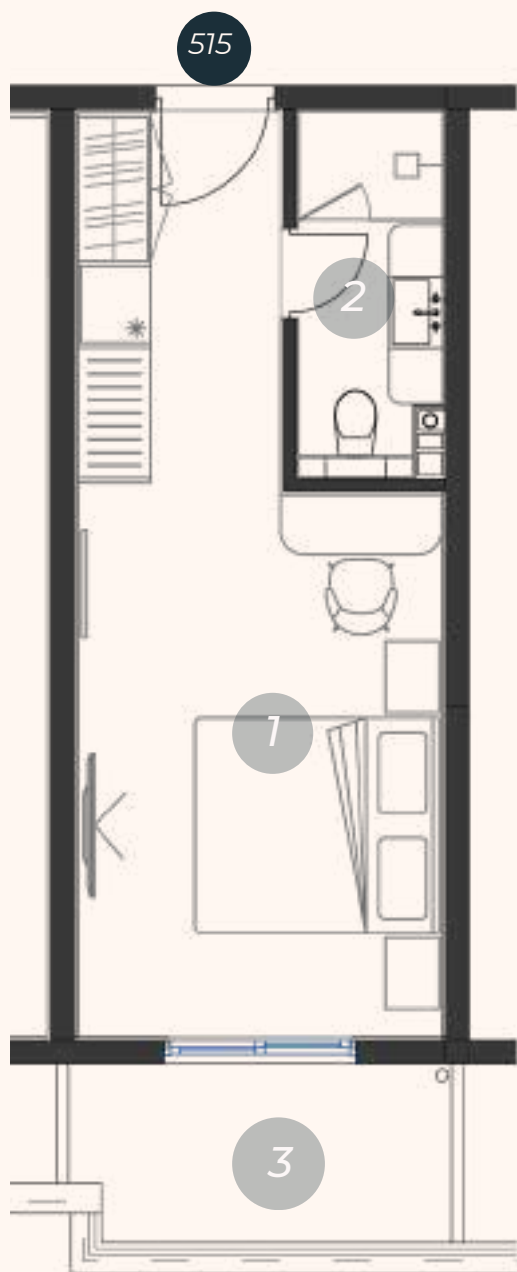


507	32m2
508	24m2
509	26m2
510	27m2
511	27m2
512	26m2
513	26m2
514	27m2
515	27m2
516	26m2
517	24m2
518	32m2

Tip A - Dvokrevetna soba - VI sprat / Double rooms - 6th floor



605	26m2
606	26m2
607	23m2
608	23m2
609	26m2
610	26m2

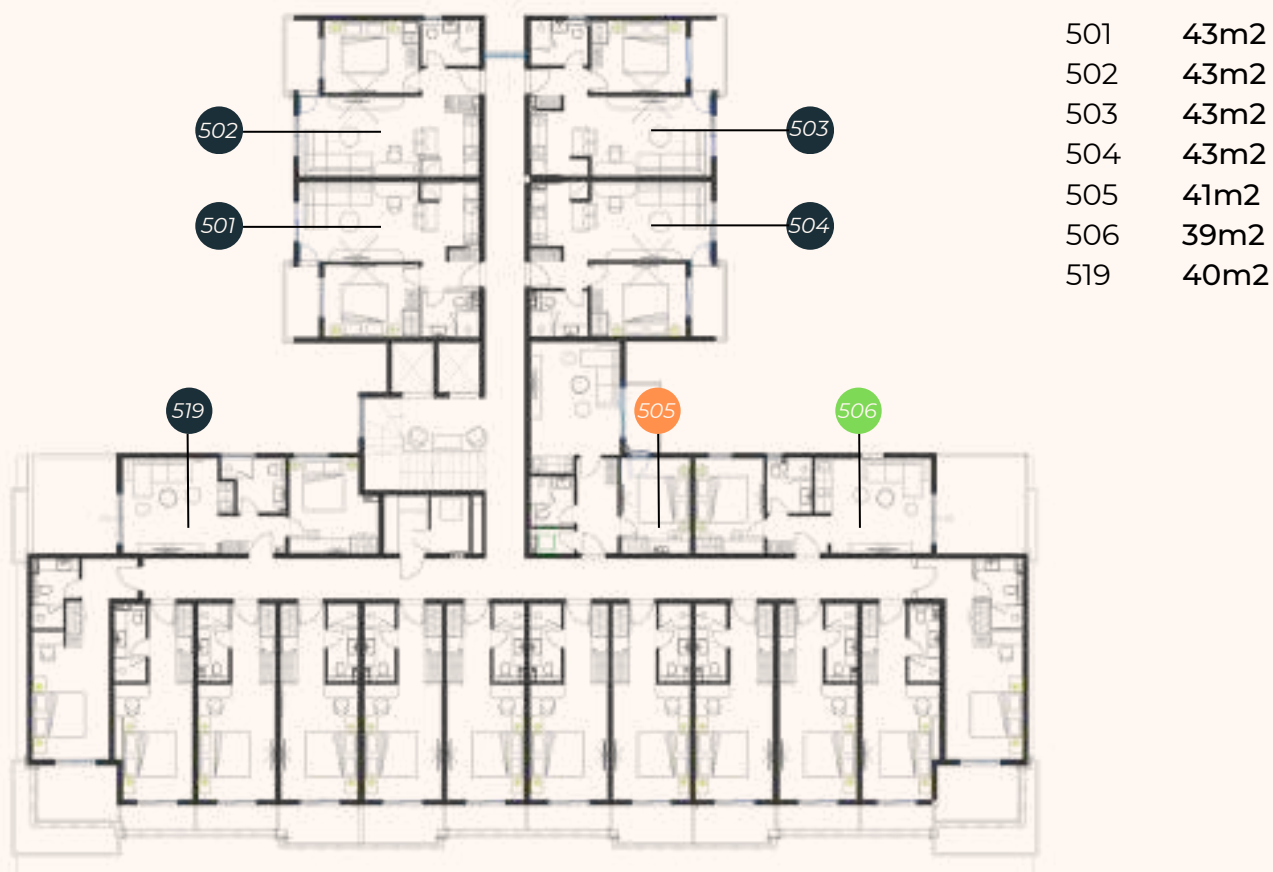


SVE SOBE I APARTMANI POKRIVENI SU NAJSAVREMENIJOM OPREMOM I KVALITETNIM MATERIJALIMA KOJI SVOJIM KARAKTERISTIKAMA GARANTUJU FUNKCIONALNOST I TRAJNOST.

- Podovi su rađeni od visoko kvalitetnog višeslojnog , prethodno četkanog i uljanog hrastovog parketa.
- Keramika u svim kupatilima je velikih formata (75x150cm) italijanskog brenda Atlas Concorde.
- Primjena savremenih hotelskih sistema omogućava svakom gostu da lako dobije sve potrebne informacije i pomoć od hotelskog osoblja u bilo koje vrijeme.
- Sistem klimatizacije povezan je sa recepcijom, pa je moguće kontrolisati temperaturu u jedinicama onda kada gost nije u njima. Klimatizacija brenda LG karakteristična je po modernom dizajnu svojih unutrašnjih jedinica i kontrola jednostavnih za korišćenje.
- Kompletan namještaj je rađen po mjeri po od kombinacije medijapana i dekorativnih univera po pažljivo rađenom projektu enterijera.
- Kombinacija više vrsta rasvjete omogućava formiranje prijatne atmosfere u svakom dijelu jedinice.
- Sigurnosni sistemni omogućavaju da se svaki gost osjeća bezbjedno u svakom dijelu hotela.

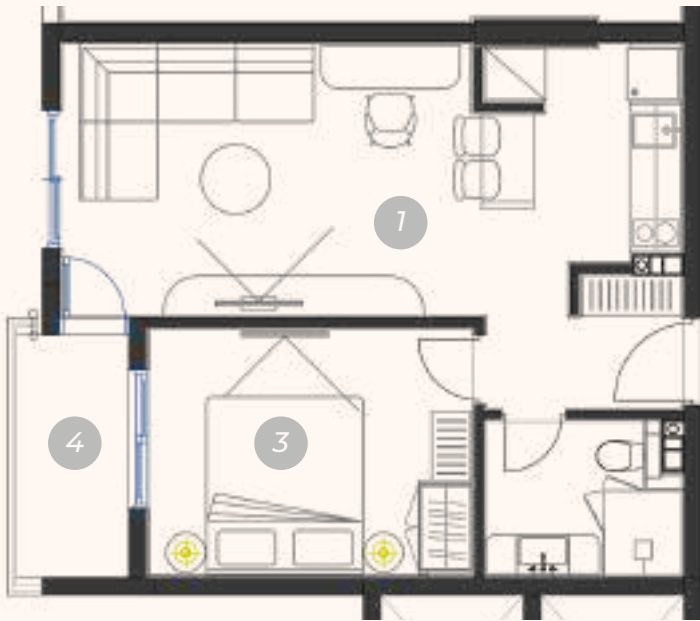


Tip B - Apartman sa jedom spavaćom sobom - V sprat
Standard suite - 5th floor

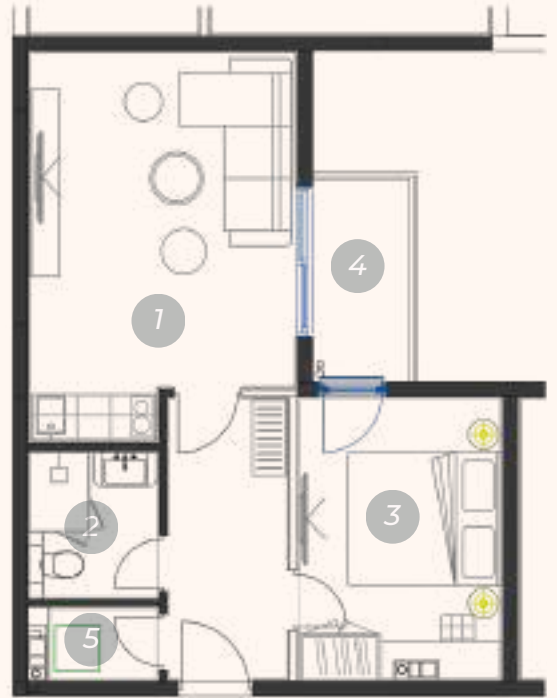


Tip B - Apartman sa jedom spavaćom sobom - VI sprat
Standard suite - 6th floor

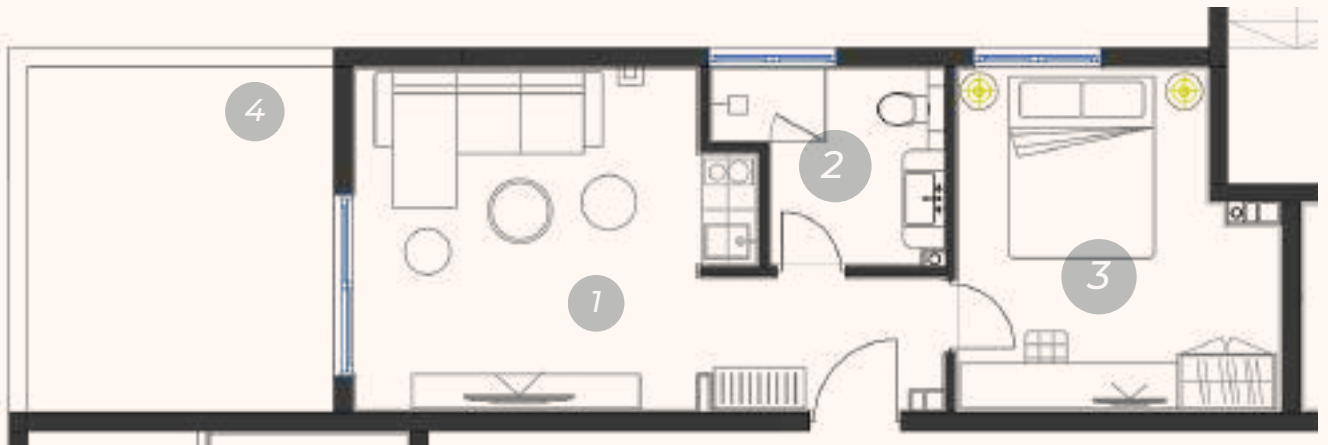




601



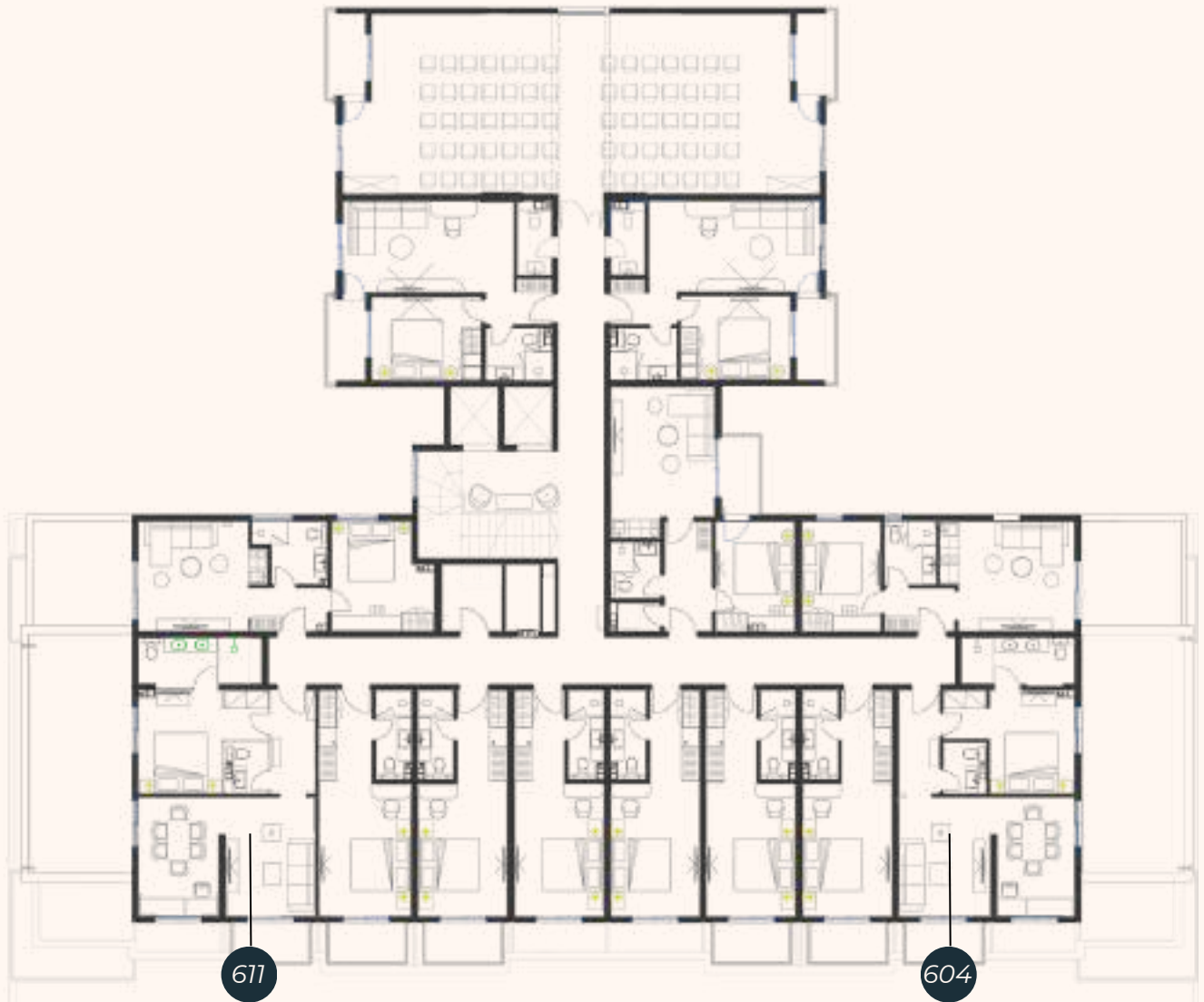
505



519

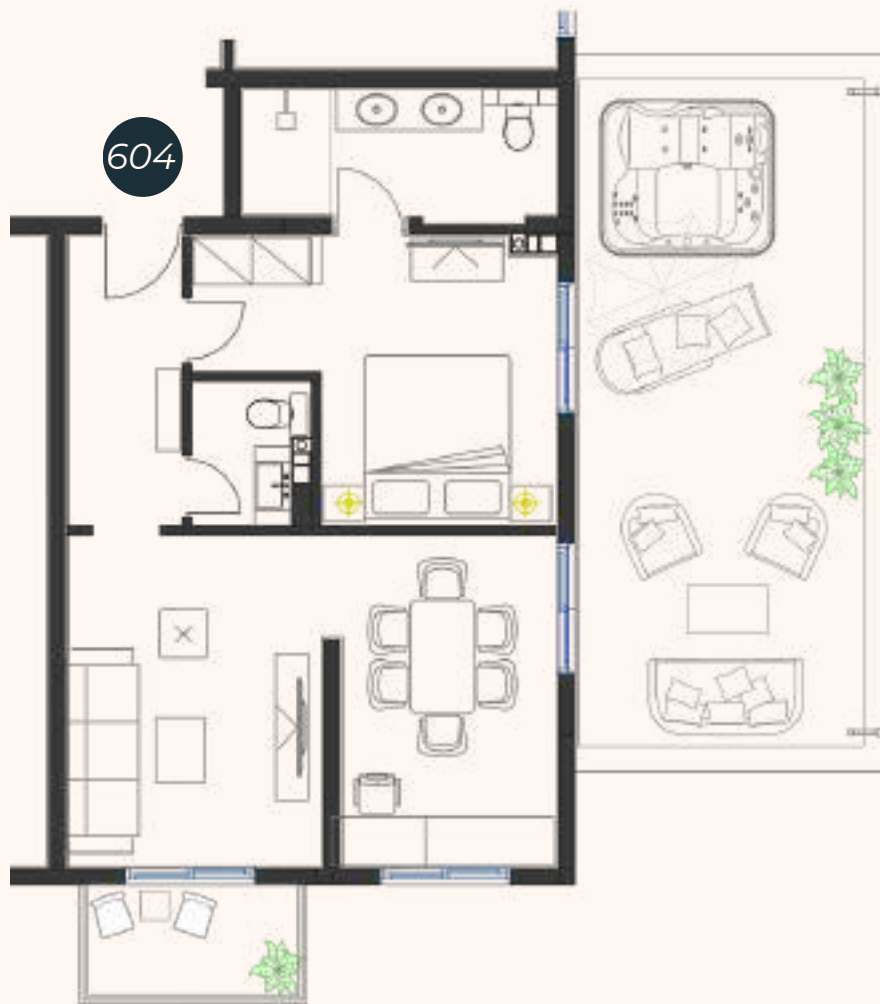


Tip D - Executive apartman - VI sprat / 6th floor



604 54m² + terasa 29m²
611 54m² + terasa 29m²





ALL ROOMS AND APARTMENTS ARE EQUIPPED WITH THE MOST MODERN EQUIPMENT AND QUALITY MATERIALS THAT GUARANTEE FUNCTIONALITY AND DURABILITY.

- The floors are made of high-quality multi-layer, previously brushed and oiled oak parquet.
- Ceramics in all bathrooms are of large format (75x150cm) from the Italian brand Atlas Concorde.
- The application of modern hotel systems allows every guest to easily get all the necessary information and help from the hotel staff at any time.

- The air conditioning system is connected to the reception, so it is possible to control the temperature in the units when the guest is not in them. Air conditioners of the LG brand are characterized by the modern design of their internal units and easy-to-use controls.
- Complete furniture is made to measure from a combination of MDF and decorative panels according to a carefully designed interior design.
- The combination of several types of lighting enables the formation of a pleasant atmosphere in every part of the unit.
- Security systems allow every guest to feel safe in every part of the hotel.



DVOKREVNENE SOBE / DOUBLE ROOMS - 18 jedinica / 18 units

Oznaka Room number	Površina Area	PD broj PD number
507	32m2	PD 155
508	24m2	PD 154
509	26m2	PD 153
510	27m2	PD 152
511	27m2	PD 151
512	26m2	PD 150
513	26m2	PD 149
514	27m2	PD 148
515	27m2	PD 147
516	26m2	PD 146
517	24m2	PD 145
518	32m2	PD 144
605	26m2	PD 171
606	26m2	PD 170
607	23m2	PD 169
608	23m2	PD 168
609	26m2	PD 167
610	26m2	PD 166

APARTMANI SA JEDNOM SPAVAĆOM SOBOM / STANDARD SUITES - 12 jedinica / 12 units

Oznaka Room number	Površina Area	PD broj PD number
501	43m2 + PM	PD 139 + PD 3
502	43m2 + PM	PD 137 + PD 4
503	43m2 + PM	PD 138 + PD 5
504	43m2 + PM	PD 140 + PD 6
505	41m2 + PM	PD 142 + PD 7
506	39m2 + PM	PD 143 + PD 56
519	40m2 + PM	PD 141 + PD 57
601	43m2 + PM	PD 159 + PD 8
602	41m2 + PM	PD 161 + PD 58
603	34m2 + terasa 9m2 + PM	PD 162 + PD 50
612	35m2 + terasa 8m2 + PM	PD 165 + PD 51
613	43m2 + PM	PD 160 + PD 38

EXECUTIVE APARTMANI / EXECUTIVE SUITES - 2 jedinice / 2 units

Oznaka Room number	Površina Area	PD broj PD number
604	54m2 + terasa 29m2 + PM	PD 164 + PD 54
611	54m2 + terasa 29m2 + PM	PD 163 + PD 55



SIGNUM HOTEL

PODGORICA

Ul. 4. jula, br. 62/3